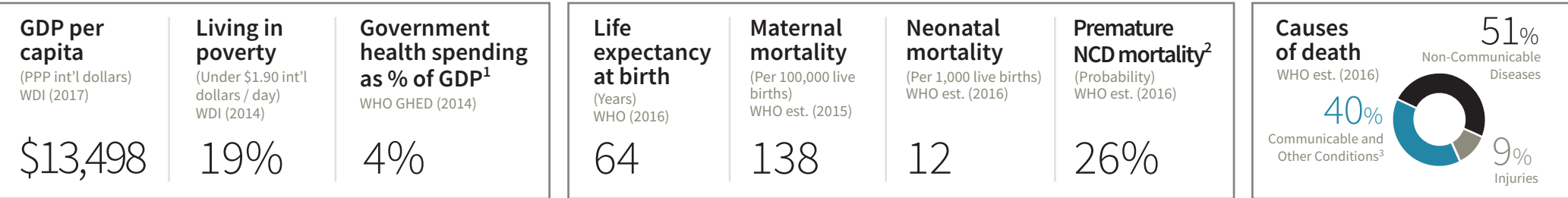


COUNTRY CONTEXT AT-A-GLANCE



\$ FINANCING

WHO est. (2014 data)

PHC spending:

\$153 Per capita

Prioritization of PHC:

Overall health spending⁴

30% on PHC

Government health spending⁵

34% on PHC

Sources of PHC spending:

60% Government⁶

40% Other

CAPACITY

Primary Health Care Progression Model⁷

Governance

Progression Model: 1/5

Inputs

Progression Model: 1/5

Population Health & Facility Management

Progression Model: 1/5

PERFORMANCE

Access Index⁸

0 to 100: [Progress bar]

Quality Index⁸

Ideal Clinic Facility Profiles & Ideal Clinic Framework version 17 (2017)

0 to 100: [Progress bar at 90]

Service Coverage Index

2017 UHC Global Monitoring Report

0 to 100: [Progress bar at 57]

EQUITY

Access: % with perceived barriers due to cost, by wealth quintile

0 to 100: [Progress bar]

Coverage of RMNCH⁹ services, by mother's education

RSA Demographic and Health Survey (2016 data)

0 to 100: [Progress bar with markers at 77 and 84]

Outcomes: Under-five mortality¹⁰, by residence

0 to 100: [Progress bar]

Note: Indicator values presented here may differ from country data sources due to the use of standardized categories and methods to enhance international comparability. Finance indicators are calculated using WHO's approach for estimating PHC expenditure from country health accounts reports; these differ from the Republic of South Africa's PHC classifications.

- Domestic general government health expenditure as % of gross domestic product (GDP)
- Probability of dying between ages 30 and 70 from cardiovascular disease, cancer, diabetes, or chronic respiratory disease
- Communicable, maternal, perinatal, and nutritional conditions
- Current PHC expenditure as % of Current Health Expenditure (CHE)
- Domestic general government PHC expenditure as % of domestic general government health expenditure
- Domestic general government PHC expenditure as % of current PHC expenditure
- The PHC Progression Model uses mixed methods to assess foundational capacities of PHC on a scale from 1 (low) to 4 (high)
- Because different data/indicators are used in each country, composite index values may not be comparable across countries. See page 2 for the specific indicators used in this VSP.
- Coverage of RMNCH services reflects the average coverage of 5 RMNCH interventions along the continuum of care (see indicator description sheet for details).
- Deaths of children before age 5, per 1,000 live births

Last updated 10/2018

SOUTH AFRICA	SCORE	PERCENTAGE	SOURCE	YEAR
ACCESS				
Financial				
<i>No recent indicator available from international or national data sources</i>				
Geographic				
<i>No recent indicator available from international or national data sources</i>				
QUALITY		90		
Comprehensiveness				
Average availability of 5 RMNCH services**		99%	<i>Ideal Clinic Facility profiles</i>	2017
Average availability of HIV and TB services**		99%	<i>Ideal Clinic Facility profiles</i>	2017
Availability of NCD services**		97%	<i>Ideal Clinic Facility profiles</i>	2017
Continuity				
DTP3 dropout rate*		11%	<i>WHO/UNICEF</i>	2017
Treatment success rate for new TB cases		81%	<i>WHO TB Programme</i>	2015
Person-Centeredness				
<i>No recent indicator available from international or national data sources</i>				
Provider availability				
<i>No recent indicator available from international or national data sources</i>				
Provider Competence				
<i>No recent indicator available from international or national data sources</i>				
Safety				
Adequate waste disposal**		87%	<i>Ideal Clinic Framework version 17</i>	2017-18
Adequate infection control**		84%	<i>Ideal Clinic Framework version 17</i>	2017-18
SERVICE COVERAGE		57		
Reproductive, Maternal, Newborn and Child Health				
Demand for family planning satisfied with modern methods		84%	<i>UHC Global Monitoring Report</i>	2017
Antenatal care coverage (4+ visits)		87%	<i>UHC Global Monitoring Report</i>	2017
Coverage of DTP3 immunization		75%	<i>UHC Global Monitoring Report</i>	2017
Care-seeking for suspected child pneumonia		65%	<i>UHC Global Monitoring Report</i>	2017
Infectious diseases				
Tuberculosis cases detected and treated with success		49%	<i>UHC Global Monitoring Report</i>	2017
People living with HIV receiving anti-retroviral treatment		49%	<i>UHC Global Monitoring Report</i>	2017
Children under 5 with diarrhea receiving ORS		41%	<i>imputed***</i>	2015
Non-Communicable Diseases (NCDs)				
% of population with normal blood pressure****		73%	<i>UHC Global Monitoring Report</i>	2017

*These variables must be transformed by subtracting the value from 100 when calculating summary scores. **Country-specific (proxy) indicator, used in absence of globally comparable survey data. ***Due to lack of recent data, score imputed based on regional average 2010 to 2015. ****Age-standardized and rescaled when included in the Service Coverage index (see detailed indicator descriptions). Note: Summary scores for the domains of Access, Quality, and Coverage are calculated by taking the average of indicator values within each subdomain, and then taking the average across subdomain scores.