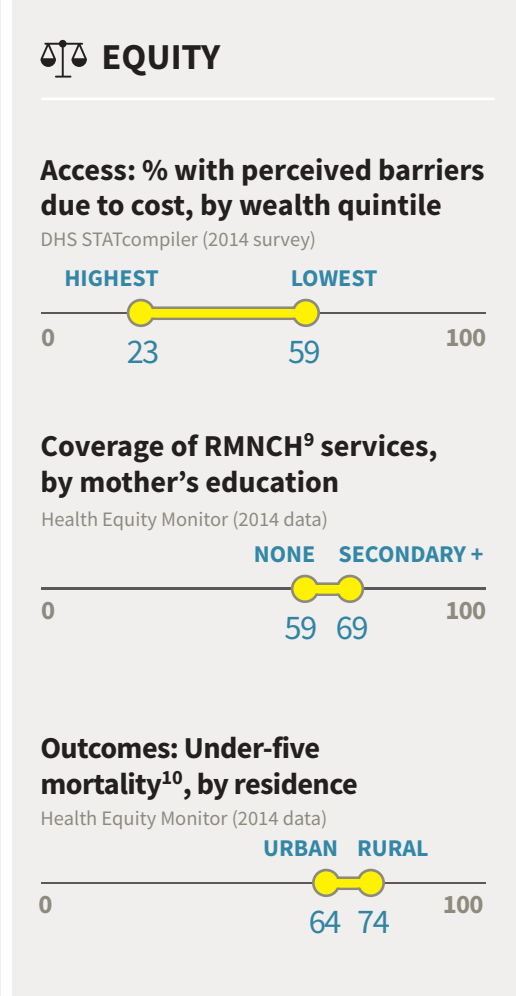
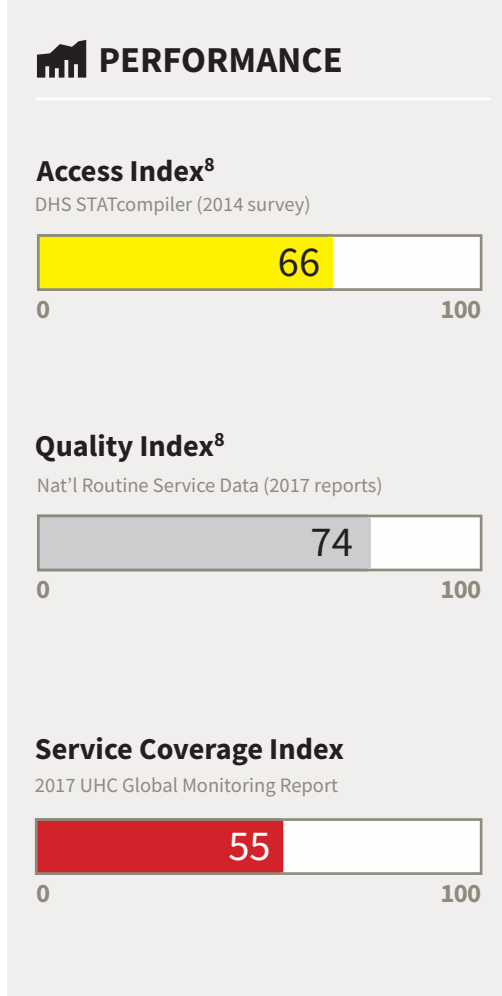
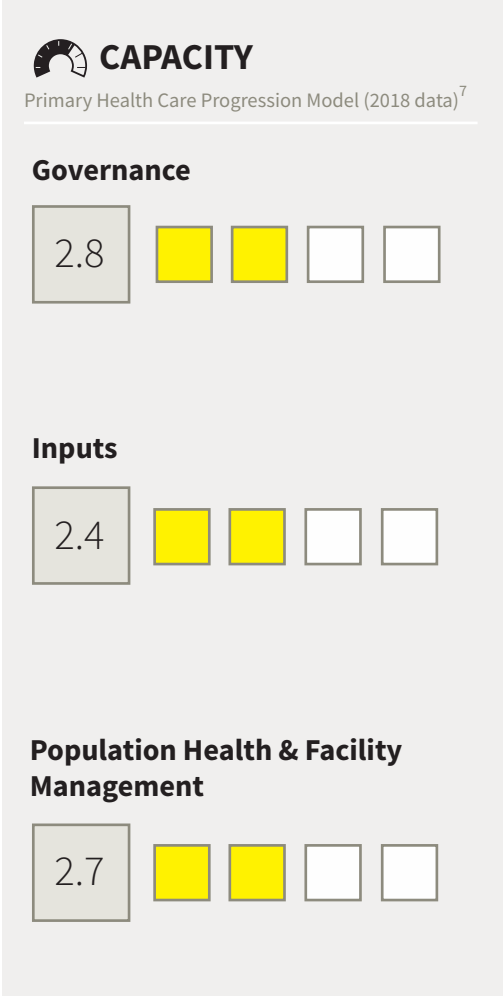
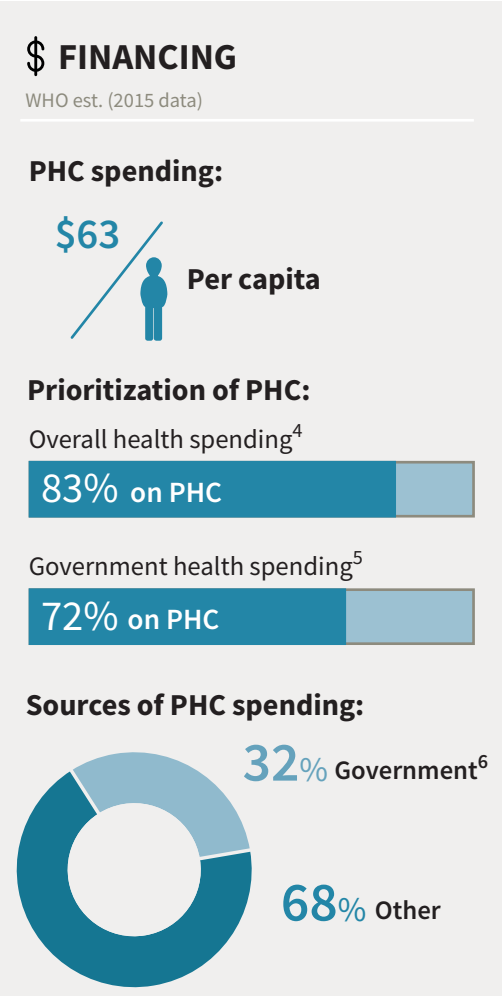
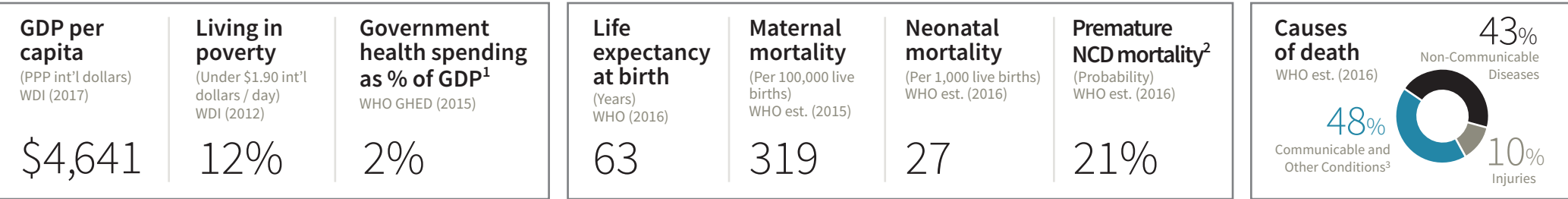


COUNTRY CONTEXT AT-A-GLANCE



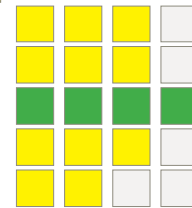
Note: Indicator values presented here may differ from country data sources due to the use of standardized categories and methods to enhance international comparability. See Indicator Description Sheet for details.

- Domestic general government health expenditure as % of gross domestic product (GDP)
- Probability of dying between ages 30 and 70 from cardiovascular disease, cancer, diabetes, or chronic respiratory disease
- Communicable, maternal, perinatal, and nutritional conditions
- Current PHC expenditure as % of Current Health Expenditure (CHE)
- Domestic general government PHC expenditure as % of domestic general government health expenditure
- Domestic general government PHC expenditure as % of current PHC expenditure
- The PHC Progression Model uses mixed methods to assess foundational capacities of PHC on a scale from 1 (low) to 4 (high)
- Because different data/indicators are used in each country, composite index values may not be comparable across countries. See page 2 for the specific indicators used in this VSP.
- The composite coverage index is a weighted score reflecting coverage of eight RMNCH interventions along the continuum of care (http://www.who.int/gho/health_equity/report_2015/en/)
- Deaths of children before age 5, per 1,000 live births

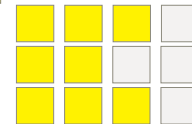
Last updated 10/2018

GHANA
SCORE
GOVERNANCE
2.8
Governance and Leadership
3.0

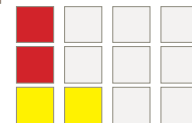
- Measure 1: Primary health care policies (1/2)
- Measure 2: Primary health care policies (2/2)
- Measure 3: Quality management infrastructure
- Measure 4: Social accountability (1/2)
- Measure 5: Social accountability (2/2)


Adjustment to Population Health Needs
2.7

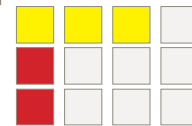
- Measure 6: Surveillance
- Measure 7: Priority setting
- Measure 8: Innovation and learning


INPUTS
2.4
Drugs and Supplies
1.3

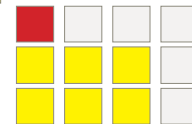
- Measure 9: Stock-out of essential medicines
- Measure 10: Basic equipment availability
- Measure 11: Diagnostic supplies


Facility Infrastructure
1.7

- Measure 12: Facility density
- Measure 13: Facility amenities
- Measure 14: Standard safety precautions and equipment


Information Systems
2.3

- Measure 15: Civil Registration and Vital Statistics
- Measure 16: Health Management Information Systems
- Measure 17: Personal care records


Workforce
3.3

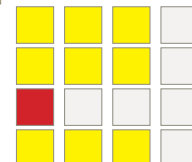
- Measure 18: Density and distribution
- Measure 19: Training
- Measure 20: Community health workers


Funds
3.3

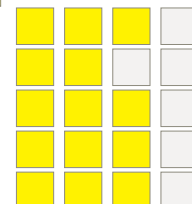
- Measure 21: Facility budgets
- Measure 22: Financial Management Information System
- Measure 23: Salary payment


POPULATION HEALTH AND FACILITY MANAGEMENT
2.7
Population Health Management
2.5

- Measure 24: Local priority setting
- Measure 25: Community engagement
- Measure 26: Empanelment
- Measure 27: Proactive population outreach


Facility Organization and Management
2.8

- Measure 28: Team-based care organization
- Measure 29: Facility management capability and leadership
- Measure 30: Information system use
- Measure 31: Performance measurement and management (1/2)
- Measure 32: Performance measurement and management (2/2)



GHANA	SCORE	PERCENTAGE	SOURCE	YEAR
ACCESS	66			
Financial				
Perceived access barriers due to treatment costs*		42%	DHS STATcompiler	2014
Geographic				
Perceived access barriers due to distance*		25%	DHS STATcompiler	2014
QUALITY	74			
Comprehensiveness				
Avg. availability of RMNCH services**		94%	Nat'l Routine Service Data	2017
Avg. availability of infectious disease services **		65%	Nat'l Routine Service Data	2017
Avg. availability of NCD services**		6%	Nat'l Routine Service Data	2017
Continuity				
DTP3 dropout rate*		0%	WHO/UNICEF	2017
Treatment success rate for new TB cases		85%	WHO TB Programme	2015
Person-Centeredness				
<i>No recent indicator available from international or national data sources</i>				
Provider availability				
<i>No recent indicator available from international or national data sources</i>				
Provider Competence				
<i>No recent indicator available from international or national data sources</i>				
Safety				
<i>No recent indicator available from international or national data sources</i>				
SERVICE COVERAGE	55			
Reproductive, Maternal, Newborn and Child Health				
Demand for family planning satisfied with modern methods		43%	UHC Global Monitoring Report	2017
Antenatal care coverage (4+ visits)		87%	UHC Global Monitoring Report	2017
Coverage of DTP3 immunization		88%	UHC Global Monitoring Report	2017
Care-seeking for suspected child pneumonia		56%	UHC Global Monitoring Report	2017
Infectious diseases				
Tuberculosis cases detected and treated with success		28%	UHC Global Monitoring Report	2017
People living with HIV receiving anti-retroviral treatment		28%	UHC Global Monitoring Report	2017
Use of insecticide-treated nets (ITN) for malaria prevention		66%	UHC Global Monitoring Report	2017
Children under 5 with diarrhea receiving ORS		49%	DHS STATcompiler	2014
Non-Communicable Diseases (NCDs)				
% of population with normal blood pressure***		76%	UHC Global Monitoring Report	2017

*These variables must be transformed by subtracting the value from 100 when calculating summary scores. **Country-specific (proxy) indicator, used in absence of globally comparable survey data. ***Age-standardized and rescaled when included in the Service Coverage index (see detailed indicator descriptions). Note: Summary scores for the domains of Access, Quality, and Coverage are calculated by taking the average of indicator values within each subdomain, and then taking the average across subdomain scores.